

NK
7999
N27
CHM

A-1

ARMOR BRONZE



Artistic and ideal gifts in
BOOK ENDS
DOOR STOPS
ART OBJECTS
TABLE *and* FLOOR LAMPS

The NATIONAL
METALIZING
COMPANY

presented by
Wm R. Lovanville Sept 1922

NR
7447
1127
CHM

739.4
A734

ARMOR BRONZE

A SEAMLESS ARMOR OF PURE BRONZE
CAST OVER AN EVERLASTING CORE

ARMOR BRONZE has attained a standard of excellence never before approached in any other metallic process except the finest grade of cast-bronze.

By this wonderful process it is now possible to procure fac-simile reproductions of the world's most notable sculpture and objects d'art at prices which place them within reach of the most moderate purse.

ARMOR BRONZE PRODUCTS include a magnificent assortment of subjects suitable for gifts for all occasions and for general decorative use in the home.

This catalogue illustrates a large variety of

BOOK ENDS, DOOR STOPS
ART OBJECTS, TABLE *and* FLOOR LAMPS

We manufacture an extensive range of Decorative Lighting Fixtures for residences and Buildings of all kinds.

Illustrations and prices of stock designs may be had on application.

Drawings and estimates on special designs are furnished without charge on receipt of plans or specifications.

Our latest production is a new finish, or rather an old process that we have revived. The ancient Egyptians and Chinese knew how to apply color to bronze by what is termed the "Polychrome" method.

We are merely doing what the ancients did in the way they did it. It is a process that produces colors that are soft in tone and harmonious in combination. The finish is permanent and beautiful.

On some of the articles thus finished the "Sgraffito" process has been used. This, too, is an old process, a method of etching by hand through the colors to allow the antique gold (which is the main color used for the ground) to shine through in a variety of delicate designs.

The color illustration on the opposite page gives only a vague suggestion of the unusual effects produced by Polychrome and Sgraffito. Other subjects which may be had, finished in this method, are listed on the following pages.

All of our designing and sculpture is under the general direction of Francis G. Plant, an artist of international experience, and associated with us are some of the most prominent American and European sculptors.

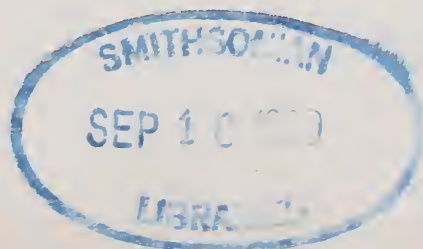
The NATIONAL METALIZING COMPANY

Show-rooms, Studio
and Sales Offices,

333 Fourth Avenue, (near 25th Street)
NEW YORK CITY

Catalogue D C. All previous catalogues cancelled.

12024



ARMOR



BRONZE



"SCRIBE" BOOK ENDS

BY ALLEN

NO. 349

HEIGHT 4 $\frac{1}{4}$ " WIDTH 2 $\frac{3}{4}$ " DEPTH 3 $\frac{1}{4}$ "

Price \$5.00 Pair



"TUG-OF-WAR" BOOK ENDS

BY MORANI

NO 341

HEIGHT 7" WIDTH 5 $\frac{1}{2}$ " DEPTH 3 $\frac{1}{2}$ "

Price \$7.00 Pair



"LAUGHING BOY" BOOK ENDS

BY DONATELLO

NO. 344

HEIGHT 7" WIDTH 6" DEPTH 2 $\frac{1}{2}$ "

Price \$8.00 Pair

THE NATIONAL METALIZING COMPANY

ARMOR



BRONZE



"SKULL AND BOOK" BOOK ENDS

MODERN

NO. 329

HEIGHT 5¼" WIDTH 3¾" DEPTH 5"

Price \$5.00 Pair



"THE INTRUDER" BOOK ENDS

BY MORANI

NO. 324

HEIGHT 7½" WIDTH 4½" DEPTH 4½"

Price \$7.00 Pair



"SLEEPY CAT" DOOR STOP

MODERN

NO. 201

HEIGHT 8" WIDTH 5" DEPTH 6"

Price in Black or
White \$6.00 Each

THE NATIONAL METALIZING COMPANY

Page Five

ARMOR



BRONZE



Price \$7.00 Pair

"ATHLETE" BOOK ENDS

BY MELIODON

NO. 333

HEIGHT 8" WIDTH 6" DEPTH 4"



Price \$7.00 Pair

"THE JESTER" BOOK ENDS

BY RUHL

NO. 332

HEIGHT 7" WIDTH 4½" DEPTH 4"



Price \$7.00 Pair

"WOOD IMP" BOOK ENDS

BY MELIODON

NO. 335

HEIGHT 7½" WIDTH 4½" DEPTH 4"

THE NATIONAL METALIZING COMPANY



"YOUNG STUDENT" BOOK ENDS
BY MORANI
NO. 315
HEIGHT 6 $\frac{1}{4}$ " WIDTH 5 $\frac{3}{4}$ "

Price \$7.00 Pair



"THE CAPTIVE" BOOK ENDS
BY MORANI
NO. 318
HEIGHT 8 $\frac{1}{2}$ " WIDTH 4 $\frac{3}{4}$ "

Price \$7.00 Pair



"FROLIC" BOOK ENDS
BY MORANI
NO. 319
HEIGHT 7 $\frac{1}{2}$ " WIDTH 5"

Price \$7.00 Pair

ARMOR



BRONZE

Price \$6.00 Pair



"MONK WITH STAFF" BOOK ENDS
ANTIQUE

NO. 287
HEIGHT 7½" WIDTH 5"

Price \$7.00 Pair



"PEEK-A-BOO" BOOK ENDS
BY JOHNSON

NO. 312
HEIGHT 6" WIDTH 5"

Price \$7.00 Pair



"MONK WITH CRUCIFIX" BOOK ENDS
ANTIQUE

NO. 288
HEIGHT 8" WIDTH 5"

THE NATIONAL METALIZING COMPANY



"MONK WITH BOOK" BOOK ENDS
ANTIQUE

NO. 285
HEIGHT 7" WIDTH 4"

Price \$6.00 Pair



"ITALIAN RENAISSANCE" BOOK ENDS
MODERN

NO. 289
HEIGHT 7¼" WIDTH 7"

Price \$7.00 Pair

Price in
Polychrome
\$10.00 Pair



"MONK WITH ROSARY" BOOK ENDS
ANTIQUE

NO. 286
HEIGHT 7" WIDTH 4"

Price \$6.00 Pair

ARMOR



BRONZE

Price \$7.00 Pair

Price in
Polychrome
and Sgraffito
\$10.00 Pair



"BUDDHA" BOOK ENDS
ANTIQUE

NO. 320

HEIGHT 6" WIDTH 5½"

Price \$8.00 Pair



"SILENCE" BOOK ENDS
BY MORANI

NO. 317

HEIGHT 8" WIDTH 5¼"

Price \$7.00 Pair



"THE DREAMER" BOOK ENDS
BY MORANI

NO. 316

HEIGHT 5½" WIDTH 7¼"

THE NATIONAL METALIZING COMPANY

Page Ten



"PLAYMATES" BOOK ENDS

BY RUHL

NO. 407

HEIGHT 7¼" WIDTH 4½" DEPTH 5½"

Price \$8.00 Pair



"SLUMBER" BOOK ENDS

BY MORANI

NO. 404

HEIGHT 7½" WIDTH 5½" DEPTH 6"

Price \$8.00 Pair



"YE-PHILOSOPHER" BOOK ENDS

BY MORANI

NO. 410

HEIGHT 6½" WIDTH 5" DEPTH 4"

Price \$6.00 Pair

ARMOR



BRONZE



Price \$9.00 Pair

"CUPID AND PSYCHE" BOOK ENDS

BY JOHNSON

NO. 401

HEIGHT 7½" WIDTH 6" DEPTH 3¾"



Price \$8.00 Pair

"INDIAN" BOOK ENDS

BY MELIODON

NO. 405

HEIGHT 8" WIDTH 7" DEPTH 3¾"



Price \$6.00 Pair

"THE TOILER" BOOK ENDS

BY MORANI

NO. 406

HEIGHT 8" WIDTH 4½" DEPTH 6½"

THE NATIONAL METALIZING COMPANY



"YE BOOKWORM" BOOK ENDS

BY F. G. PLANT

NO. 321

HEIGHT 7" WIDTH 4 1/2" DEPTH 5 1/2"

Price \$10.00 Pair



"ECHO" BOOK ENDS

BY RUHL

NO. 326

HEIGHT 9 1/2" WIDTH 4" DEPTH 5"

Price \$10.00 Pair



"MEDICINE MAN" BOOK ENDS

BY LAMBERT

NO. 328

HEIGHT 8" WIDTH 4 1/2" DEPTH 5 1/2"

Price \$9.00 Pair

ARMOR



BRONZE



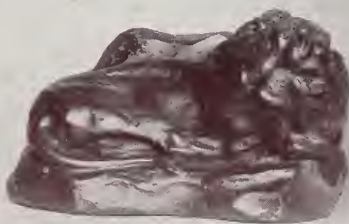
Price \$10.00 Pair

"YE OLDE PRINTER" BOOK ENDS

BY RUHL

NO. 327

HEIGHT 7 $\frac{1}{4}$ " WIDTH 5" DEPTH 4 $\frac{1}{4}$ "



Price \$9.00 Pair

"REPOSING LION" BOOK ENDS OR DOOR STOP

BY MORANI

NO. 322

HEIGHT 5" WIDTH 8" DEPTH 6"



Price \$8.00 Pair

Price in
Polychrome
\$12.00 Pair

"PEACE" BOOK ENDS

BY MORANI

NO. 323

HEIGHT 8 $\frac{1}{2}$ " WIDTH 4 $\frac{3}{4}$ " DEPTH 3 $\frac{1}{2}$ "

THE NATIONAL METALIZING COMPANY

Page Fourteen



Price \$9.00 Pair

"LION" BOOK ENDS

BY RUHL

NO. 338

HEIGHT 7" WIDTH 7" DEPTH 4"



Price \$8.00 Pair

"EAGLE" BOOK ENDS

BY RUHL

NO. 337

HEIGHT 7" WIDTH 5" DEPTH 5"

Price in
Polychrome
\$12.00 Pair



"CROUCHING TIGER" BOOK ENDS

BY MORANI

NO. 325

HEIGHT 5" WIDTH 8" DEPTH 5"

Price \$8.00 Pair

ARMOR



BRONZE

Price \$9.00 Pair
Price in
Polychrome
\$12.00 Pair



"DUTCH BOY & GIRL" BOOK ENDS
MODERN

NOS. 290 & 291
HEIGHT 7" WIDTH 6 $\frac{3}{4}$ "

Price \$12.00 Pair



"GOAT & GATE" BOOK ENDS
BY KRUPKA

NO. 310
HEIGHT 7 $\frac{3}{4}$ " WIDTH 8 $\frac{1}{2}$ "

Price \$8.00 Pair
Price in
Polychrome
\$12.00 Pair



"SPHINX" BOOK ENDS
BY GUDEBROD

NO. 311
HEIGHT 7" WIDTH 4 $\frac{1}{2}$ "

THE NATIONAL METALIZING COMPANY



"BUFFALO" BOOK ENDS
BY KRUPKA
NO. 308
HEIGHT 8" WIDTH 9"

Price \$10.00 Pair



"OWL" BOOK ENDS
BY KRUPKA
NO. 309
HEIGHT 9" WIDTH 5"

Price \$10.00 Pair



"ELEPHANT" BOOK ENDS
BY KRUPKA
NO. 307
HEIGHT 7½" WIDTH 9"

Price \$10.00 Pair

ARMOR



BRONZE



"THE WAVE" BOOK ENDS

BY RUHL

NO. 339

HEIGHT 8¼" WIDTH 7" DEPTH 5"

Price \$10.00 Pair



"THE KISS" BOOK ENDS

BY RUHL

NO. 340

HEIGHT 8" WIDTH 4½" DEPTH 5"

Price \$12.00 Pair



"KNOWLEDGE" BOOK ENDS

BY JOHNSON

NO. 330

HEIGHT 8" WIDTH 6½" DEPTH 4¾"

Price \$12.00 Pair

Price in
Polychrome
\$16.00 Pair

THE NATIONAL METALIZING COMPANY

Page Eighteen



Price \$12.00 Pair
Price in
Polychrome
\$16.00 Pair

"WISDOM" BOOK ENDS

BY JOHNSON

NO. 402

HEIGHT 8" WIDTH 4¾" DEPTH 6"



Price \$12.00 Pair

"INDIAN SCOUT" BOOK ENDS

BY RUHL

NO. 408

HEIGHT 9½" WIDTH 4" DEPTH 5"



Price \$12.00 Pair

"NIGHT" BOOK ENDS

BY JOHNSON

NO. 403

HEIGHT 7½" WIDTH 7¼" DEPTH 4½"

ARMOR



BRONZE

Price \$15.00 Pair

Price in
Polychrome
\$20.00 Pair



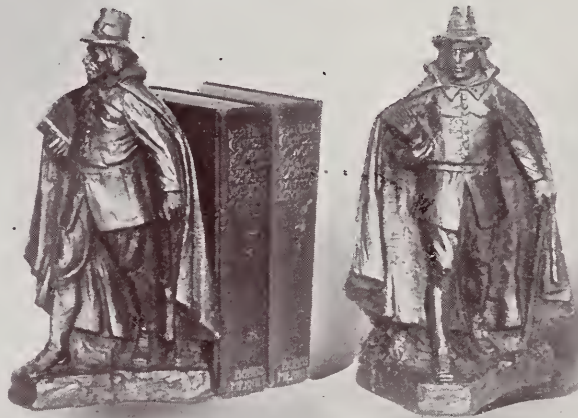
"JOAN-OF-ARC" BOOK ENDS

BY ALLEN

NO. 351

HEIGHT 8½" WIDTH 6" DEPTH 3¾"

Price \$12.00 Pair



"PURITAN" BOOK ENDS

BY RUHL

NO. 343

HEIGHT 10½" WIDTH 4½" DEPTH 6"

Price \$9.00 Pair

Price in
Polychrome
\$12.00 Pair



"EGYPTIAN" BOOK ENDS

BY WRIGHT

NO. 350

HEIGHT 7½" WIDTH 4" DEPTH 5¼"

THE NATIONAL METALIZING COMPANY

Page Twenty



Price \$10.00 Pair
Price in
Polychrome
\$15.00 Pair

"THE POTTER" BOOK ENDS

BY RUHL
NO. 342

HEIGHT 8" WIDTH 5" DEPTH 4 1/4"



Price \$20.00 Pair

"BUFFALO HUNTER" BOOK ENDS

BY ALLEN
NO. 353

HEIGHT 7 1/2" WIDTH 7 1/2" DEPTH 4 1/2"



Price \$12.00 Pair
Price in
Polychrome
\$16.00 Pair

"SHAKESPEARE" BOOK ENDS

BY ALLEN
NO. 352

HEIGHT 7" WIDTH 6" DEPTH 4 1/4"

ARMOR



BRONZE



Price \$12.00

Price in
Polychrome
Finish \$17.00

"TRUTH" INK STAND

BY RUHL

NO. 346

HEIGHT 8½" WIDTH 8½" DEPTH 10¼"



Price \$14.00

"SCRIBE" INK STAND

BY ALLEN

NO. 348

HEIGHT 7" WIDTH 8" DEPTH 6"

THE NATIONAL METALIZING COMPANY



BACK VIEW



FRONT VIEW

"CHINESE SHRINE" NO. 355 WITH "LOTUS BUDDHA" NO. 354

HEIGHT OF BUDDHA 9 1/2"
 WIDTH OF BUDDHA 7 1/2"
 DEPTH OF BUDDHA 5 1/2"

Price of Chinese Shrine only, \$30.00
 Price in Polychrome finish, \$40.00

Price of "Lotus Buddha" only, \$10.00
 Price in Polychrome finish, \$15.00

Price of Chinese Shrine and Lotus Buddha complete, \$40.00
 Price in Polychrome finish, complete, \$55.00



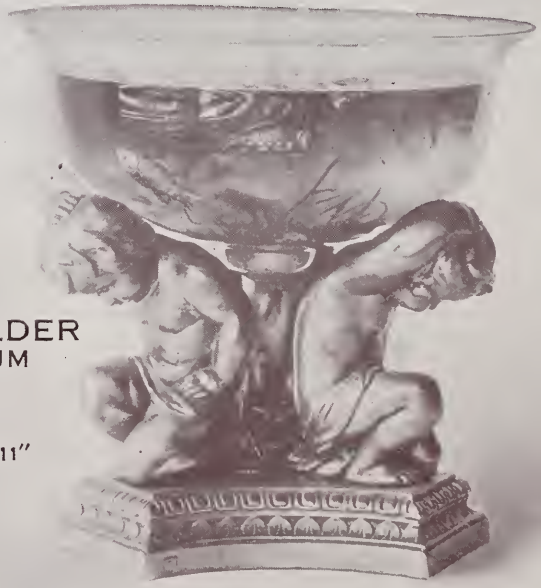
Price complete
with Etched and
Painted Bowl
No. PB/87
\$60.00

Price with Plain
Etched Bowl
No. B/86, \$40.00

Price without
Bowl, \$30.00

NO. 347
"CUPID" BOWL HOLDER
WITH ETCHED AND PAINTED
GLASS BOWL
NO. P.B./87

TOTAL HEIGHT 15"
HEIGHT OF BOWL HOLDER 11"
DIAMETER OF BASE 10"
DIAMETER OF BOWL 15"
DEPTH OF BOWL 5"



Price complete
with Crystal
Aquarium, \$36.00

NO. 347 A
"CUPID" AQUARIUM HOLDER
WITH CRYSTAL AQUARIUM
NO. B/104

TOTAL HEIGHT 16"
HEIGHT OF AQUARIUM HOLDER 11"
DIAMETER OF BASE 10"
DIAMETER OF AQUARIUM 16"
DEPTH OF AQUARIUM 8"



NO. 356

**BOWL STAND
WITH ETCHED GLASS BOWL**

NO. B/86

TOTAL HEIGHT 10"
HEIGHT OF BOWL STAND 5"
DIAMETER OF BASE 10"
DIAMETER OF BOWL 15"
DEPTH OF BOWL 5"

Price complete
with Plain
Etched Bowl
\$22.00



NO. 356 A

**AQUARIUM STAND
WITH CRYSTAL AQUARIUM**

NO. B/104

TOTAL HEIGHT 12"
HEIGHT OF AQUARIUM STAND 5"
DIAMETER OF BASE 10"
DIAMETER OF AQUARIUM 16"
DEPTH OF AQUARIUM 8"

Price complete
with Crystal
Aquarium, \$18.00



Price \$11.00 Each
 Price in
 Polychrome
 \$15.00 Each



BUDDHA" WITH LOTUS BASE
 NO. 359
 HEIGHT 10½" WIDTH 6½"

Price \$9.00



"TROUBLED PUP" DOOR STOP
 BY ROTH
 NO. 206
 HEIGHT 10" WIDTH 6"

Price \$12.00 Each



"CHINESE DOG"
 NO. 345
 HEIGHT 9" WIDTH 9"



"BUFFALO"
MODERN
NO. 293
HEIGHT 9" WIDTH 13"

Price \$12.00



"BUDDHA"
ANTIQUE
NO. 296
HEIGHT 12½" WIDTH 10½"

Price \$16.00

Price in
Polychrome
and Sgraffito
Finish, \$24.00



"PIGS"
BY ROTH
NO. 294
HEIGHT 6½" WIDTH 12½"

Price \$20.00



No. 266. Price \$14.00
No. 261. Price \$5.00

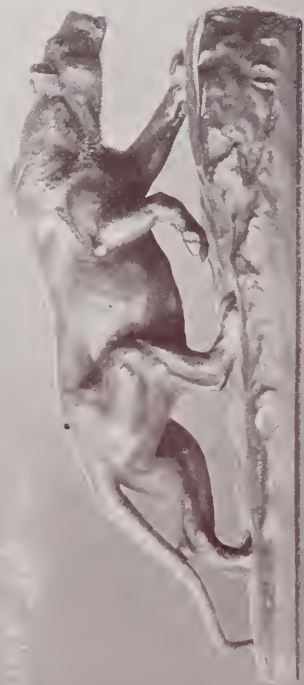


"CROUCHING LION"
BY BONHEUR
NO. 266
HEIGHT 9" WIDTH 19"



"DANCING BEAR"
BY BARYE
NO. 261
HEIGHT 9" WIDTH 5"

No. 274. Price \$14.00
No. 212. Price \$20.00

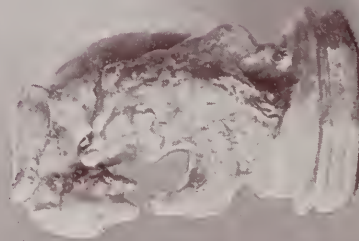


"CROUCHING LIONESS"
BY BONHEUR
NO. 274
HEIGHT 9" WIDTH 19"

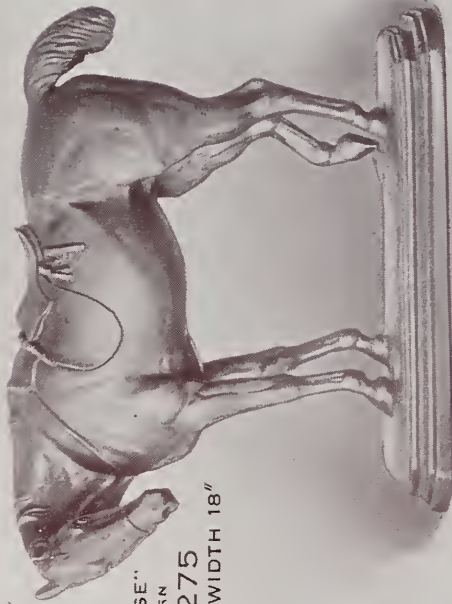


"ELEPHANT"
MODERN
NO. 212
HEIGHT 11" WIDTH 17"

No. 262. Price \$7.00



"FIGHTING BEARS"
BY BARYE
NO. 262
HEIGHT 9" WIDTH 6"



HORSE"
MODERN
NO. 275
HEIGHT 13" WIDTH 18"



"TIGER WALKING"
BY BARYE
NO. 265
HEIGHT 10" WIDTH 16"



"TIGER"
BY BARYE
NO. 264
HEIGHT 10" WIDTH 16"



"INDIAN ELEPHANT"
MODERN
NO. 277
HEIGHT 9" WIDTH 13"



"LION"
BY BARYE
NO. 263
HEIGHT 10" WIDTH 16"

No. 275. Price \$20.00

No. 264. Price \$12.00

No. 277. Price \$10.00

No. 265. Price \$16.00

No. 263. Price \$12.00



No. 222. Price \$8.00

No. 241. Price \$3.00

No. 223. Price \$6.00

No. 221. Price \$14.00

No. 272. Price \$12.00

No. 268. Price \$6.00

No. 276. Price \$12.00

No. 240. Price \$3.00

"VICTORY"
BY MOREAU

NO. 221

HEIGHT 17" WIDTH 10"



"GREEK SLAVE"
BY JEROME

NO. 222

HEIGHT 16" WIDTH 5"



"ATHLETE"
BY HASSSELBERG

NO. 223

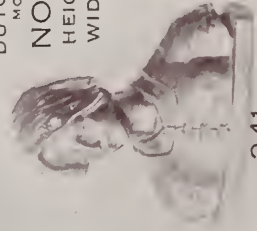
HEIGHT 15"
WIDTH 5"



"DUTCH GIRL"
MODERN

NO. 241

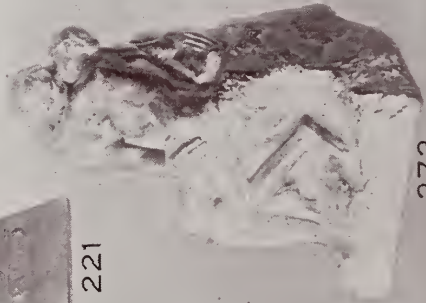
HEIGHT 6"
WIDTH 6"



"THE KISS"
BY RODIN

NO. 272

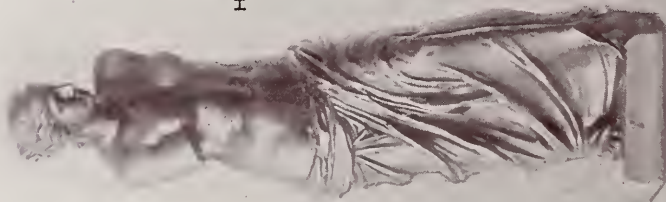
HEIGHT 10"
WIDTH 6"



"VENUS DE MILO"
ANTIQUE

NO. 276

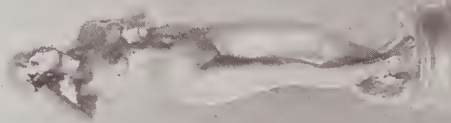
HEIGHT 19" WIDTH 6"



"CROCUS"
BY BORGESON

NO. 268

HEIGHT 12"
WIDTH 4"



"DUTCH BOY"
MODERN

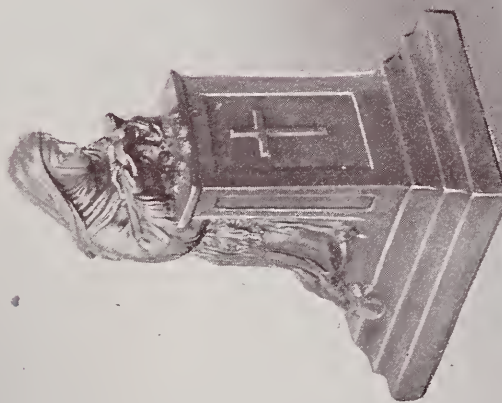
NO. 240

HEIGHT 6"
WIDTH 6"

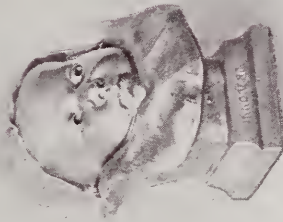




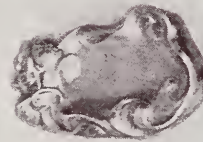
"OWL & BOOK"
MODERN
NO. 207
HEIGHT 6 $\frac{1}{4}$ " WIDTH 6"



"ST. RITA"
MODERN
NO. 314
HEIGHT 12" WIDTH 10"



"INNOCENCE"
MODERN
NO. 295
HEIGHT 8" WIDTH 5"



"GIRLS HEAD" TRAY
BY MELIODON
NO. 303
LENGTH 5 $\frac{1}{2}$ " WIDTH 3 $\frac{1}{2}$ "



"EGYPTIAN CAT"
ANTIQUE
NO. 249
HEIGHT 6 $\frac{1}{2}$ " WIDTH 3 $\frac{1}{2}$ "



"MARK TWAIN"
BY KRUPKA
NO. 313
HEIGHT 11" WIDTH 7 $\frac{1}{2}$ "

No. 207. Price \$4.00

No. 314. Price \$10.00

Price in Polychrome Finish \$15.00

No. 249. Price \$2.50

Price in Polychrome Finish \$3.00

No. 313. Price \$12.00



No. 215. Price \$5.00
No. 283. Price \$2.00

No. 269. Price \$9.00
No. 281. Price \$6.00

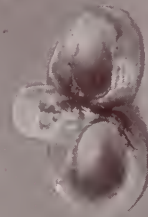
No. 224. Price \$12.00
No. 217. Price \$6.00

No. 220. Price \$5.00
No. 282. Price \$3.00

No. 270. Price \$9.00
No. 281. Price \$6.00



"BEETHOVEN"
MODERN
NO. 215
HEIGHT 12"
WIDTH 6"



"GORILLA" TRAY
MODERN
NO. 283
HEIGHT 3" WIDTH 6"

"SINGING CHERUB"
MODERN
NO. 269
HEIGHT 13" WIDTH 7"



"CUPID" BRACKET
MODERN
NO. 281
HEIGHT 8" WIDTH 7"



"APOLLO"
ANTIQUE
NO. 224
HEIGHT 14"
WIDTH 10"



"DANTE" BUST
ANTIQUE
NO. 217
HEIGHT 8" WIDTH 10"

"SINGING CHERUB"
MODERN
NO. 270
HEIGHT 13" WIDTH 7"



"CUPID" BRACKET
MODERN
NO. 281
HEIGHT 8" WIDTH 7"



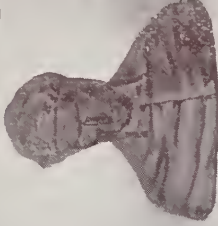
"MOZART"
MODERN
NO. 220
HEIGHT 12"
WIDTH 6"



"OWL" TRAY
MODERN
NO. 282
HEIGHT 6" WIDTH 7"



"DANTE HEAD"
ANTIQUÉ
NO. 304
HEIGHT 5"
WIDTH 5½"



"LURLINE"
MODERN
NO. 234
HEIGHT 19" WIDTH 9"



"DANTE STATUETTE"
ANTIQUÉ
NO. 300
HEIGHT 20" WIDTH 7"



"BUDDHA"
ANTIQUÉ
NO. 320A
HEIGHT 6"
WIDTH 5½"



"POESIE"
MODERN
NO. 213
HEIGHT 15" WIDTH 15"

No. 304. Price \$2.00
No. 234. Price \$24.00

No. 300. Price \$20.00
Price in Polychrome Finish \$30.00

No. 320A. Price \$3 50
Price in Polychrome and Sgraffito Finish \$5.00
No. 213. Price \$20.00



SHIELD "GLADIATORS"
BY CELLINI
NO. 253
HEIGHT 26" WIDTH 18"

253



SHIELD "JUDGMENT OF PARIS"
ANTIQUE
NO. 257
DIAMETER 24"

257

Price \$15.00

Price \$15.00



SHIELD "COMBAT"
BY CELLINI
NO. 260
HEIGHT 26" WIDTH 19"

260

Price \$15.00



SHIELD "MEDUSA"
ANTIQUE
NO. 256
DIAMETER 25"

256

Price \$18.00



NO. 759

"SLEEPY CHILDREN"
NO. 759

ELECTRIC LAMP

SHADE NO. SS/76
TOTAL HEIGHT 17"
HEIGHT OF STANDARD 10"
DIAMETER OF SHADE 10"
DIAMETER OF BASE 6"
ONE LIGHT

Price with
Shade \$16.00

Price without
Shade \$12.00



NO. 762

"OWL AND BOOKS"

NO. 762

ELECTRIC LAMP

SHADE NO. SS/76
TOTAL HEIGHT 16"
HEIGHT OF STANDARD 9"
DIAMETER OF SHADE 10"
DIAMETER OF BASE 5"
ONE LIGHT

Price with
Shade \$16.00

Price without
Shade \$12.00

ARMOR



BRONZE



NO. 780
ELECTRIC LAMP

SHADE NO. SS/23
TOTAL HEIGHT 20"
HEIGHT OF STANDARD 12"
DIAMETER OF SHADE 12"
DIAMETER OF BASE 5½"
ONE LIGHT

Price with
Shade \$14.50

Price without
Shade \$8.00



NO. 781
ELECTRIC LAMP

SHADE NO. SS/76
TOTAL HEIGHT 19"
HEIGHT OF STANDARD 11"
DIAMETER OF SHADE 12"
DIAMETER OF BASE 5"
ONE LIGHT

Price with
Shade \$17.00

Price without
Shade \$12.00

THE NATIONAL METALIZING COMPANY

ARMOR



BRONZE

Price with
Shade \$14.00

Price without
Shade \$8.00



NO. 710

NO. 710
ELECTRIC LAMP
SHADE NO. SS/24
TOTAL HEIGHT 20"
HEIGHT OF STANDARD 12"
DIAMETER OF SHADE 14"
DIAMETER OF BASE 6"
ONE LIGHT

Price with
Shade \$14.00

Price without
Shade \$8.00

NO. 709
ELECTRIC LAMP

SHADE NO. SS/22
TOTAL HEIGHT 19½"
HEIGHT OF STANDARD 12"
DIAMETER OF SHADE 14"
DIAMETER OF BASE 6"
ONE LIGHT



NO. 709

THE NATIONAL METALIZING COMPANY



NO. 711

NO. 711
ELECTRIC LAMP

SHADE NO. SS/28
TOTAL HEIGHT 19½"
HEIGHT OF STANDARD 12"
DIAMETER OF SHADE 14"
DIAMETER OF BASE 6"
ONE LIGHT

Price with
Shade \$17.50

Price without
Shade \$8.00



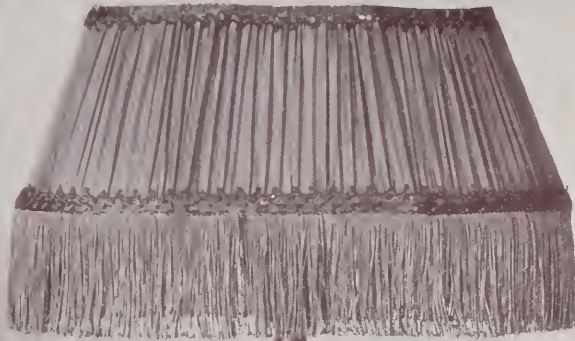
NO. 713

NO. 713
ELECTRIC LAMP

SHADE NO. SS/23
TOTAL HEIGHT 20"
HEIGHT OF STANDARD 12"
DIAMETER OF SHADE 12"
DIAMETER OF BASE 6"
ONE LIGHT

Price with
Shade \$14.50

Price without
Shade \$8.00



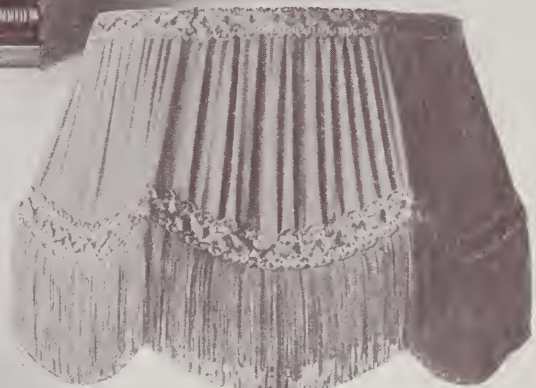
Price with
Shade \$24.00

Price without
Shade \$18.00

NO. 782

INK STAND AND
ELECTRIC LAMP

SHADE NO. SS/85
TOTAL HEIGHT 14½"
HEIGHT OF INK STAND 7"
DIAMETER OF SHADE 10½" X 5½"
DIAMETER OF BASE 8" X 6"
ONE LIGHT



Price with
Shade \$32.00

Price without
Shade \$20.00

NO. 768

ELECTRIC LAMP

SHADE NO. SS/80
TOTAL HEIGHT 23"
HEIGHT OF STANDARD 13"
DIAMETER OF SHADE 14"
DIAMETER OF BASE 8"
TWO LIGHTS

Price of
Lamp only
in Polychrome
Finish, \$25.00



ARMOR



BRONZE



Price with
Shade \$53.00

Price without
Shade \$36.00

Price of
Lamp only
in Polychrome
Finish, \$44.00

NO. 767

ELECTRIC LAMP

SHADE NO. SS/34 TOTAL HEIGHT 28"
HEIGHT OF STANDARD 18" DIAMETER OF SHADE 20"
DIAMETER OF BASE 9" THREE LIGHTS

THE NATIONAL METALIZING COMPANY

Page Forty-one

ARMOR



BRONZE



Price with
Shade \$53.00

Price without
Shade \$36.00

Price of
Lamp only
in Polychrome
Finish, \$44.00

NO. 769

ELECTRIC LAMP

SHADE NO. SS/34
TOTAL HEIGHT 26"
HEIGHT OF VASE 16"
DIAMETER OF SHADE 20"
DIAMETER OF BASE 6½"
THREE LIGHTS

THE NATIONAL METALIZING COMPANY

Page Forty-two

ARMOR



BRONZE



Price with
Shade \$45.00

Price without
Shade \$30.00

Price of
Lamp only
in Polychrome
Finish, \$35.00

NO. 772

ELECTRIC LAMP

SHADE NO. SS/79 TOTAL HEIGHT 28"
HEIGHT OF STANDARD 18" DIAMETER OF SHADE 18"
DIAMETER OF BASE 8½" THREE LIGHTS

THE NATIONAL METALIZING COMPANY

ARMOR



BRONZE



Price with
Shade \$35.00

Price without
Shade \$20.00

Price of
Lamp only
in Polychrome
and Sgraffito
Finish, \$25.00

NO. 775

ELECTRIC LAMP

SHADE NO. SS/83 TOTAL HEIGHT 29"
HEIGHT OF STANDARD 19" DIAMETER OF SHADE 18"
DIAMETER OF BASE 9" TWO LIGHTS

THE NATIONAL METALIZING COMPANY

ARMOR



BRONZE



Price with
Shade \$46.00

Price without
Shade \$24.00

Price of
Lamp only
in Polychrome
Finish, \$28.00

NO. 729

ELECTRIC LAMP

SHADE NO. SS/25 TOTAL HEIGHT 34"
HEIGHT OF STANDARD 22" DIAMETER OF SHADE 22"
DIAMETER OF BASE 9" THREE LIGHTS

THE NATIONAL METALIZING COMPANY

Page Forty-five



Price with
Shade \$40.00

Price without
Shade \$24.00

Price of
Lamp only
in Polychrome
Finish, \$30.00



NO. 783

ELECTRIC LAMP

SHADE NO. SS/34B
TOTAL HEIGHT 27½"
HEIGHT OF STANDARD 18½"
DIAMETER OF SHADE 18"
DIAMETER OF BASE 7"
TWO LIGHTS



NO. 784

EGYPTIAN" ELECTRIC LAMP

SHADE NO. SS/106
TOTAL HEIGHT 21"
HEIGHT OF STANDARD 12½"
DIAMETER OF SHADE 2"
WIDTH OF BASE 6"
TWO LIGHTS

Price with
Shade \$26.00

Price without
Shade \$16.00

Price of
Lamp only
in Polychrome
Finish, \$20.00





NO. 771
"BUDDHA"
ELECTRIC LAMP

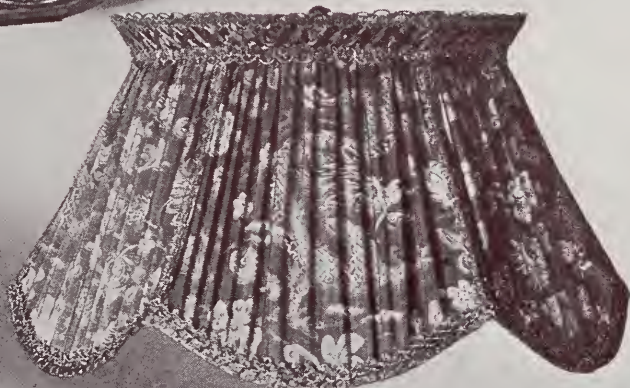
SHADE NO. SS/77
TOTAL HEIGHT 24"
HEIGHT OF BUDDHA 13"
DIAMETER OF SHADE 16"
DIAMETER OF BASE 10"
TWO LIGHTS

Price with
Shade \$40.00

Price without
Shade \$22.00

Price of
Lamp only
in Polychrome
and Sgraffito
Finish, \$30.00

See color sheet at
front of book for
color of silk shade
and color effect of
Polychrome and
Sgraffito.



NO. 770
"CHINESE DOG"
ELECTRIC LAMP

SHADE NO. SS/78
TOTAL HEIGHT 18"
HEIGHT OF DOG 10"
DIAMETER OF SHADE 14"
DIAMETER OF BASE 9"
TWO LIGHTS

Price with
Shade \$29.00

Price without
Shade \$18.00

See shade of
"Buddha" Lamp
on color plate
for color of
this shade.



ARMOR



BRONZE



Price with
Shade \$44.00

Price without
Shade \$24.00

Price of
Lamp only
in Polychrome
and Sgraffito
Finish, \$30.00

728

ELECTRIC LAMP No. 728

SHADE NO. SS/28 TOTAL HEIGHT 34"
HEIGHT OF STANDARD 22" DIAMETER OF SHADE 22"
DIAMETER OF BASE 9" THREE LIGHTS

THE NATIONAL METALIZING COMPANY

Page Forty-eight

ARMOR



BRONZE



Price with
Shade \$32.00

Price without
Shade \$18.00

NO. 714
ELECTRIC LAMP

SHADE NO. SS/26 TOTAL HEIGHT 27½"
HEIGHT OF STANDARD 16" DIAMETER OF SHADE 18"
DIAMETER OF BASE 7½" TWO LIGHTS

THE NATIONAL METALIZING COMPANY

ARMOR



BRONZE



Price with
Shade \$25.00

Price without
Shade \$14.00

Price of
Lamp only
in Polychrome
Finish, \$18.00

NO. 779

ELECTRIC LAMP

SHADE NO. SS/84
TOTAL HEIGHT 25½"
HEIGHT OF STANDARD 15½"
DIAMETER OF SHADE 18"
DIAMETER OF BASE 7½"
TWO LIGHTS



Price with
Shade \$28.00

Price without
Shade \$13.00

NO. 773

ELECTRIC LAMP

SHADE NO. SS/79
TOTAL HEIGHT 25"
HEIGHT OF STANDARD 15"
DIAMETER OF SHADE 18"
DIAMETER OF BASE 7½"
TWO LIGHTS

THE NATIONAL METALIZING COMPANY

Page Fifty

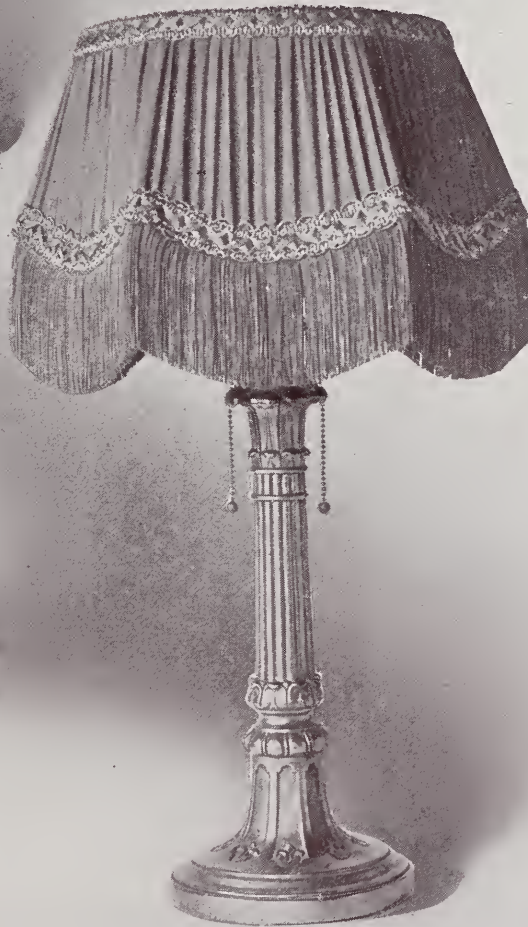


NO. 776
ELECTRIC LAMP
 SHADE NO. SS/79
 TOTAL HEIGHT 25½"
 HEIGHT OF STANDARD 15½"
 DIAMETER OF SHADE 18"
 DIAMETER OF BASE 7½"
 TWO LIGHTS

Price with
 Shade \$29.00

Price without
 Shade \$14.00

Price of
 Lamp only
 in Polychrome
 and Sgraffito
 Finish, \$20.00



NO. 777
ELECTRIC LAMP
 SHADE NO. SS/80
 TOTAL HEIGHT 25"
 HEIGHT OF STANDARD 15"
 DIAMETER OF SHADE 14"
 DIAMETER OF BASE 7"
 TWO LIGHTS

Price with
 Shade \$24.00

Price without
 Shade \$12.00

ARMOR



BRONZE



Price with
Shade \$44.00

Price without
Shade \$24.00

Price of
Lamp only
in Polychrome
Finish, \$28.00

NO. 727

ELECTRIC LAMP

SHADE NO. SS/28 TOTAL HEIGHT 34"
HEIGHT OF STANDARD 22" DIAMETER OF SHADE 22"
DIAMETER OF BASE 9" THREE LIGHTS

THE NATIONAL METALIZING COMPANY

ARMOR



BRONZE



Price with
Shade \$30.00

Price without
Shade \$16.00

Price of
Lamp only
in Polychrome
Finish, \$20.00

NO. 716

ELECTRIC LAMP

SHADE NO. SS/26, TOTAL HEIGHT 31"
HEIGHT OF STANDARD 19½" DIAMETER OF SHADE 18"
DIAMETER OF BASE 8" TWO LIGHTS

THE NATIONAL METALIZING COMPANY

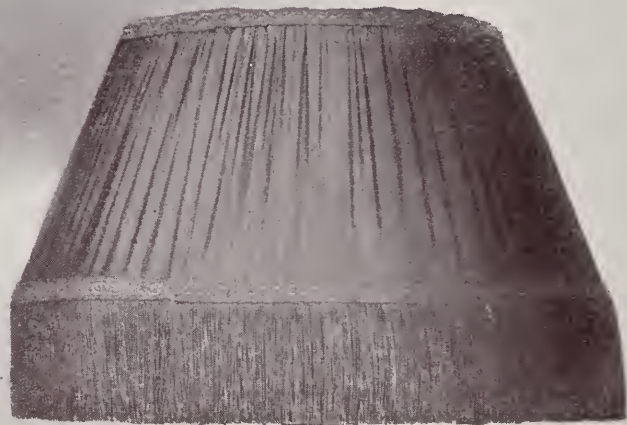
Page Fifty-three



NO. 734
ELECTRIC LAMP

SHADE NO. SS/26
TOTAL HEIGHT 26"
HEIGHT OF STANDARD 15"
DIAMETER OF SHADE 16"
DIAMETER OF BASE 7"
TWO LIGHTS

NO. 734



NO. 705
ELECTRIC LAMP

SHADE NO. SS/23
TOTAL HEIGHT 26"
HEIGHT OF STANDARD 16"
DIAMETER OF SHADE 16"
DIAMETER OF BASE 8"
TWO LIGHTS

NO. 705

Price with
Shade \$24.00

Price without
Shade \$13.00

Price with
Shade \$24.00

Price without
Shade \$14.00

Price of
Lamp only
in Polychrome
Finish, \$18.00



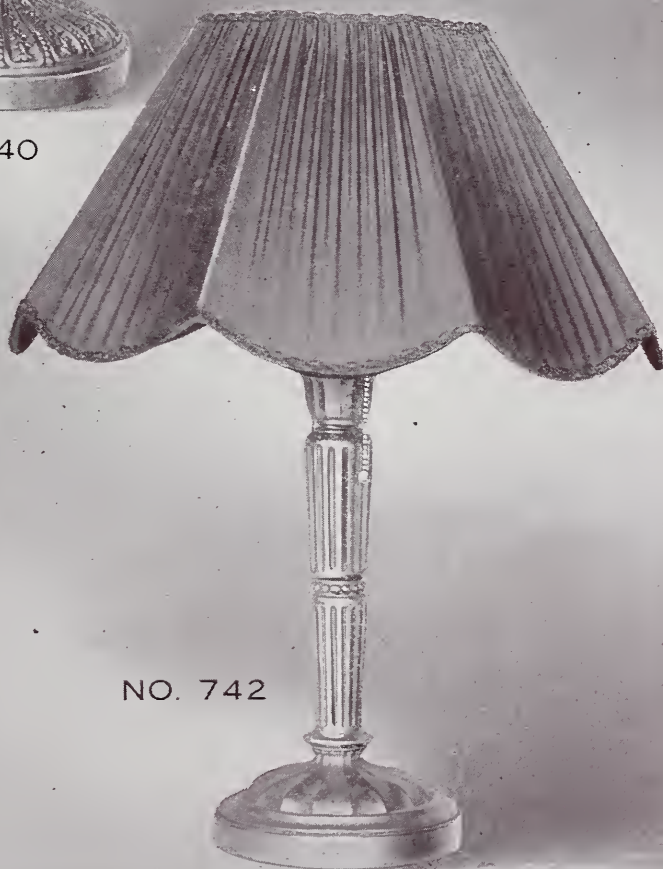
NO. 740

NO. 740
ELECTRIC LAMP

SHADE NO. SS/22
TOTAL HEIGHT 24"
HEIGHT OF STANDARD 14"
DIAMETER OF SHADE 18"
DIAMETER OF BASE 7½"
TWO LIGHTS

Price with
Shade \$23.00

Price without
Shade \$14.00



NO. 742

NO. 742
ELECTRIC LAMP

SHADE NO. SS/33
TOTAL HEIGHT 24½"
HEIGHT OF STANDARD 14"
DIAMETER OF SHADE 18"
DIAMETER OF BASE 7"
TWO LIGHTS

Price with
Shade \$21.00

Price without
Shade \$12.00

ARMOR



BRONZE



NO. 741
ELECTRIC LAMP
SHADE NO. SS/22
TOTAL HEIGHT 24"
HEIGHT OF STANDARD 14"
DIAMETER OF SHADE 16"
DIAMETER OF BASE 7½"
TWO LIGHTS

Price with
Shade \$23.00

Price without
Shade \$14.00

NO. 741



NO. 743
ELECTRIC LAMP
SHADE NO. SS/23
TOTAL HEIGHT 25"
HEIGHT OF STANDARD 14"
DIAMETER OF SHADE 16"
DIAMETER OF BASE 7½"
TWO LIGHTS

Price with
Shade \$24.00

Price without
Shade \$14.00

NO. 743

THE NATIONAL METALIZING COMPANY

ARMOR



BRONZE



NO. 751

NO. 751
ELECTRIC LAMP

SHADE NO. SS/23
TOTAL HEIGHT 25"
HEIGHT OF STANDARD 14"
DIAMETER OF SHADE 16"
DIAMETER OF BASE 8"
TWO LIGHTS

Price with
Shade \$23.00

Price without
Shade \$13.00



NO. 753

NO. 753
ELECTRIC LAMP

SHADE NO. SS/37
TOTAL HEIGHT 23½"
HEIGHT OF STANDARD 14"
DIAMETER OF SHADE 18"
DIAMETER OF BASE 7"
TWO LIGHTS

Price with
Shade \$21.00

Price without
Shade \$12.00

THE NATIONAL METALIZING COMPANY

ARMOR



BRONZE



Price with
Shade \$34.00

Price without
Shade \$20.00

NO. 739

ELECTRIC LAMP

SHADE NO. SS/26 TOTAL HEIGHT 27½"
HEIGHT OF STANDARD 16" DIAMETER OF SHADE 18"
DIAMETER OF BASE 8" TWO LIGHTS

THE NATIONAL METALIZING COMPANY

Page Fifty-eight

ARMOR



BRONZE



Price with
Shade \$54.00

Price without
Shade \$30.00

Price of
Lamp only
in Polychrome
Finish, \$35.00

NO. 719

ELECTRIC LAMP

SHADE NO. SS/28 TOTAL HEIGHT 35"
HEIGHT OF STANDARD 24" DIAMETER OF SHADE 24"
DIAMETER OF BASE 10" THREE LIGHTS

THE NATIONAL METALIZING COMPANY

ARMOR



BRONZE



NO. 750

NO. 750
ELECTRIC LAMP

SHADE NO. SS/23
TOTAL HEIGHT 25"
HEIGHT OF STANDARD 14"
DIAMETER OF SHADE 16"
DIAMETER OF BASE 8"
TWO LIGHTS

Price with
Shade \$23.00

Price without
Shade \$13.00



NO. 752

NO. 752
ELECTRIC LAMP

SHADE NO. SS/37
TOTAL HEIGHT 23½"
HEIGHT OF STANDARD 14"
DIAMETER OF SHADE 18"
DIAMETER OF BASE 7"
TWO LIGHTS

Price with
Shade \$21.00

Price without
Shade \$12.00

THE NATIONAL METALIZING COMPANY



NO. 778
ELECTRIC LAMP

SHADE NO. SS/84
TOTAL HEIGHT 25½"
HEIGHT OF STANDARD 15½"
DIAMETER OF SHADE 18"
DIAMETER OF BASE 7½"
TWO LIGHTS

Price with
Shade \$25.00

Price without
Shade \$14.00

NO. 774
ELECTRIC LAMP

SHADE NO. SS/81
TOTAL HEIGHT 24"
HEIGHT OF STANDARD 15"
DIAMETER OF SHADE 16"
DIAMETER OF BASE 8"
TWO LIGHTS

Price with
Shade \$25.00

Price without
Shade \$13.00

ARMOR



BRONZE



Price with
Shade \$50.00

Price without
Shade \$24.00

Price of
Lamp only
in Polychrome
and Sgraffito
Finish, \$30.00

NO. 730

ELECTRIC LAMP

SHADE NO SS/30 TOTAL HEIGHT 33"
HEIGHT OF STANDARD 22" DIAMETER OF SHADE 22"
DIAMETER OF BASE 11" THREE LIGHTS

THE NATIONAL METALIZING COMPANY

ARMOR



BRONZE



Price with
Shade \$44.00

Price without
Shade \$24.00

NO. 718

ELECTRIC LAMP

SHADE NO. SS/27 TOTAL HEIGHT 35½"
HEIGHT OF STANDARD 22" DIAMETER OF SHADE 20"
DIAMETER OF BASE 10" THREE LIGHTS

THE NATIONAL METALIZING COMPANY

Page Sixty-three

ARMOR



BRONZE



Price \$100.00

Price with
Silk Shades
same as No. 760
\$110.00

NO. 764
ELECTRIC FLOOR
LAMP

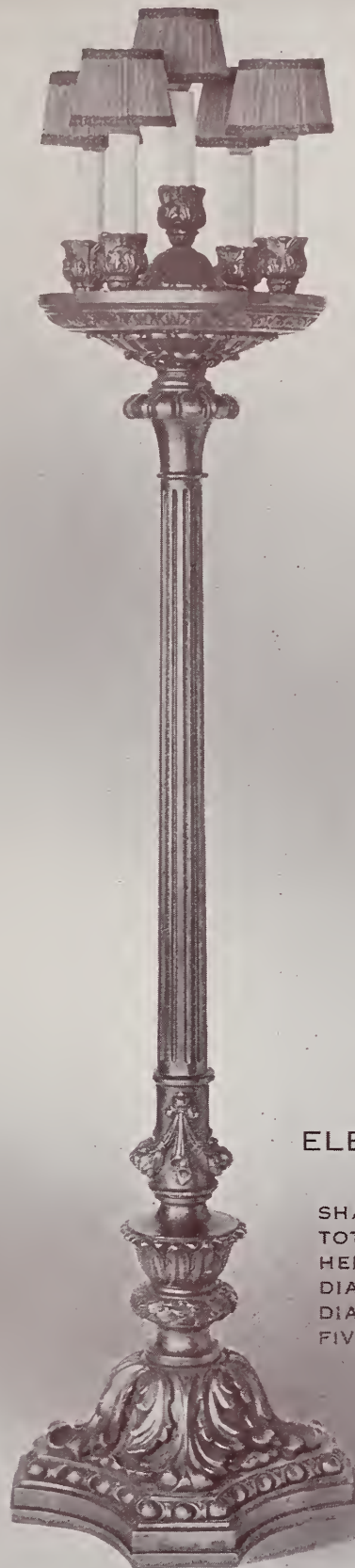
TOTAL HEIGHT 78"
DIAMETER OF BASE 16½"
FIVE LIGHTS

THE NATIONAL METALIZING COMPANY

ARMOR



BRONZE



NO. 760
ELECTRIC FLOOR
LAMP

SHADES NO. SS/82
TOTAL HEIGHT 78"
HEIGHT OF STANDARD 74"
DIAMETER OF SHADES 5½"
DIAMETER OF BASE 18"
FIVE LIGHTS

Price \$110.00

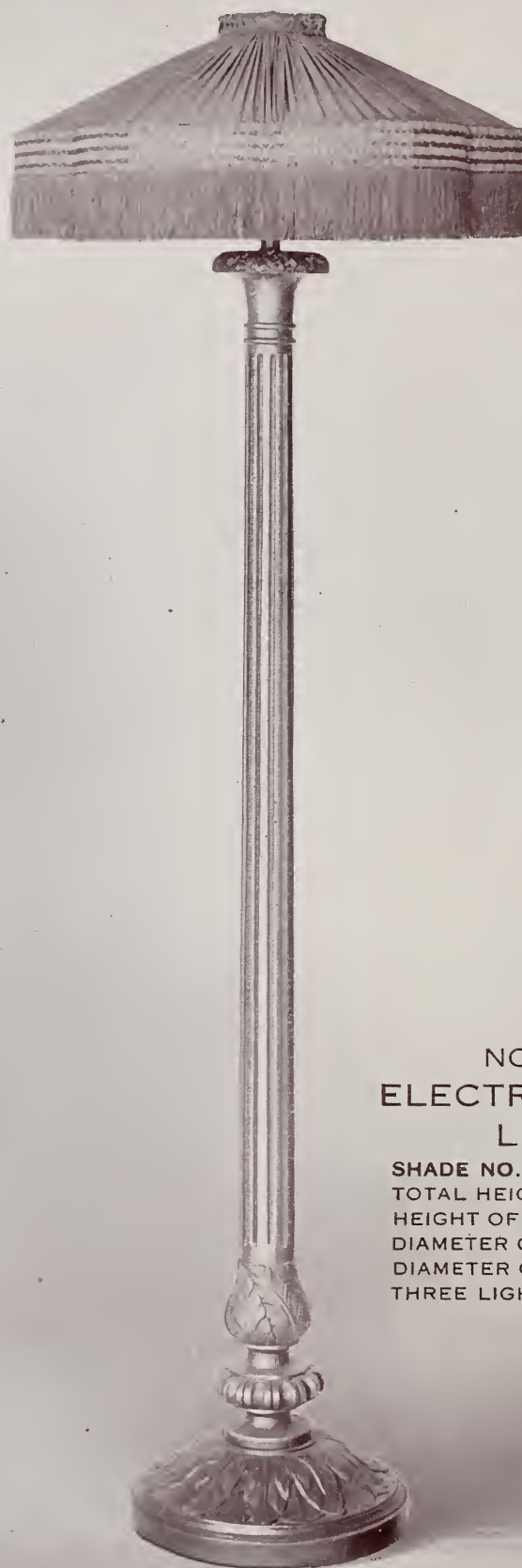
Price without
Silk Shades
same as No. 764
\$100.00

THE NATIONAL METALIZING COMPANY

ARMOR



BRONZE



Price with
Shade \$64.00

Price without
Shade \$40.00

Price of
Lamp only
in Polychrome
Finish, \$50.00

NO. 735
ELECTRIC FLOOR
LAMP

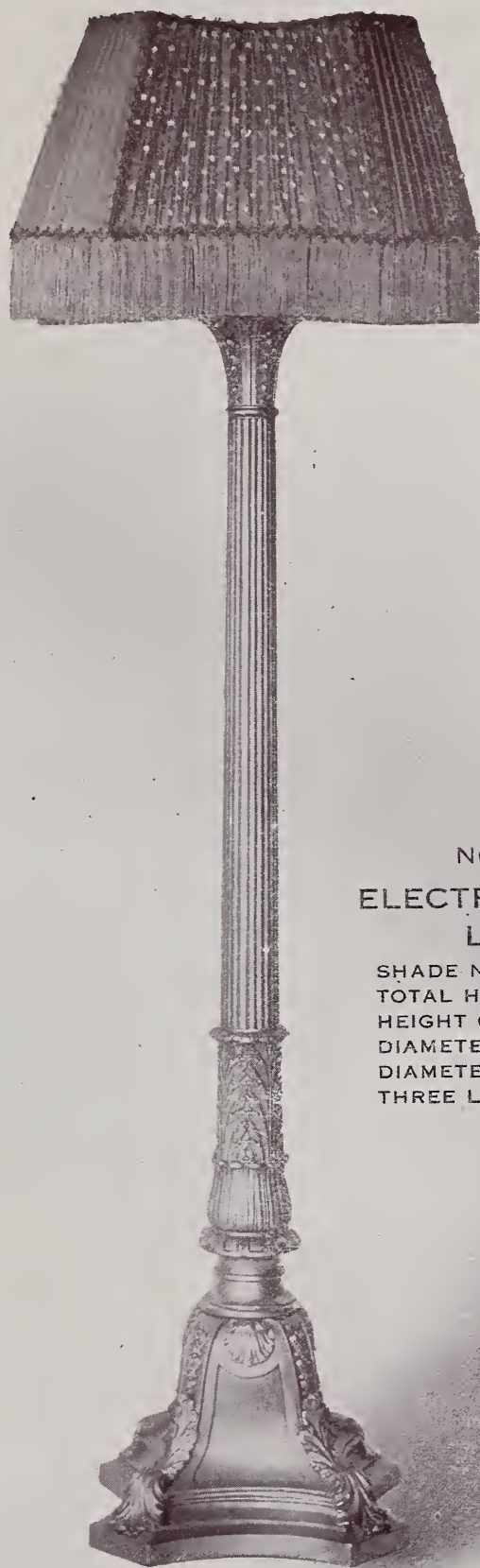
SHADE NO. SS/34
TOTAL HEIGHT 70"
HEIGHT OF STANDARD 60"
DIAMETER OF SHADE 24"
DIAMETER OF BASE 13"
THREE LIGHTS

THE NATIONAL METALIZING COMPANY

ARMOR



BRONZE



NO. 745
ELECTRIC FLOOR
LAMP

SHADE NO. SS/25
TOTAL HEIGHT 74"
HEIGHT OF STANDARD 60"
DIAMETER OF SHADE 26"
DIAMETER OF BASE 17½"
THREE LIGHTS

Price with
Shade \$78.00

Price without
Shade \$52.00

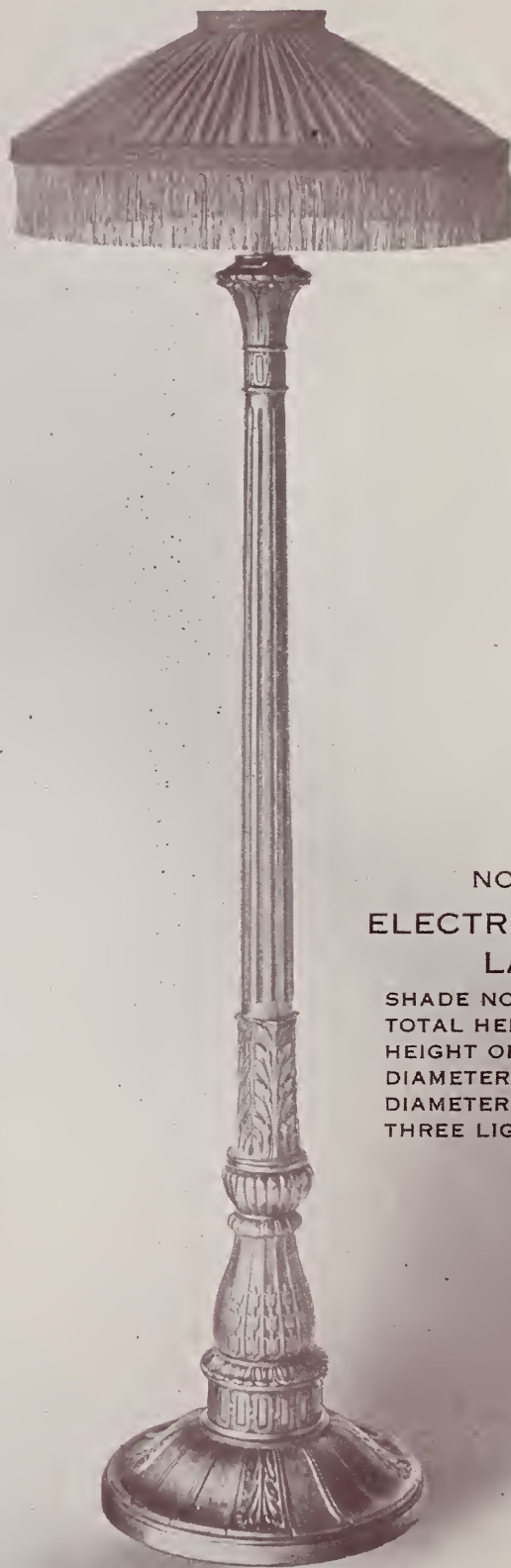
Price of
Lamp only
in Polychrome
Finish, \$65.00

THE NATIONAL METALIZING COMPANY

ARMOR



BRONZE



NO. 765

**ELECTRIC FLOOR
LAMP**

SHADE NO. 55/28
TOTAL HEIGHT 72"
HEIGHT OF STANDARD 60"
DIAMETER OF SHADE 24"
DIAMETER OF BASE 16"
THREE LIGHTS

Price with
Shade \$74.00

Price without
Shade \$50.00

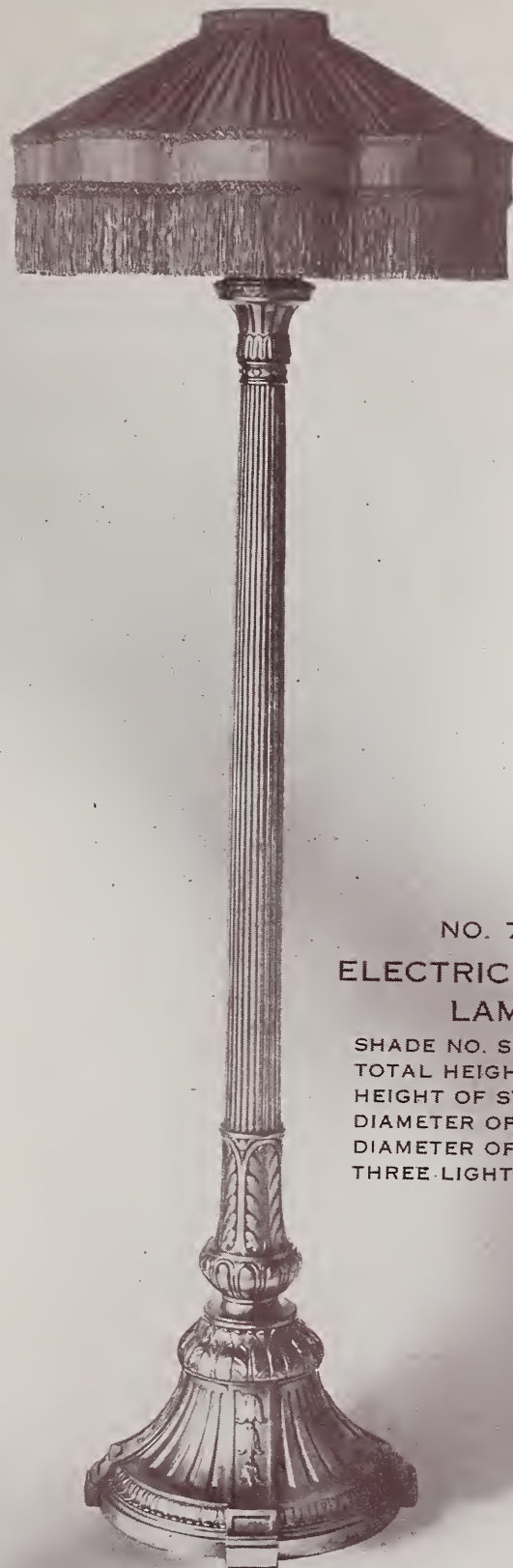
Price of
Lamp only
in Polychrome
Finish. \$64.00

THE NATIONAL METALIZING COMPANY

ARMOR



BRONZE



NO. 766
ELECTRIC FLOOR
LAMP

SHADE NO. SS/34 B
TOTAL HEIGHT 72"
HEIGHT OF STANDARD 60"
DIAMETER OF SHADE 24"
DIAMETER OF BASE 16"
THREE LIGHTS

Price with
Shade \$80.00

Price without
Shade \$56.00

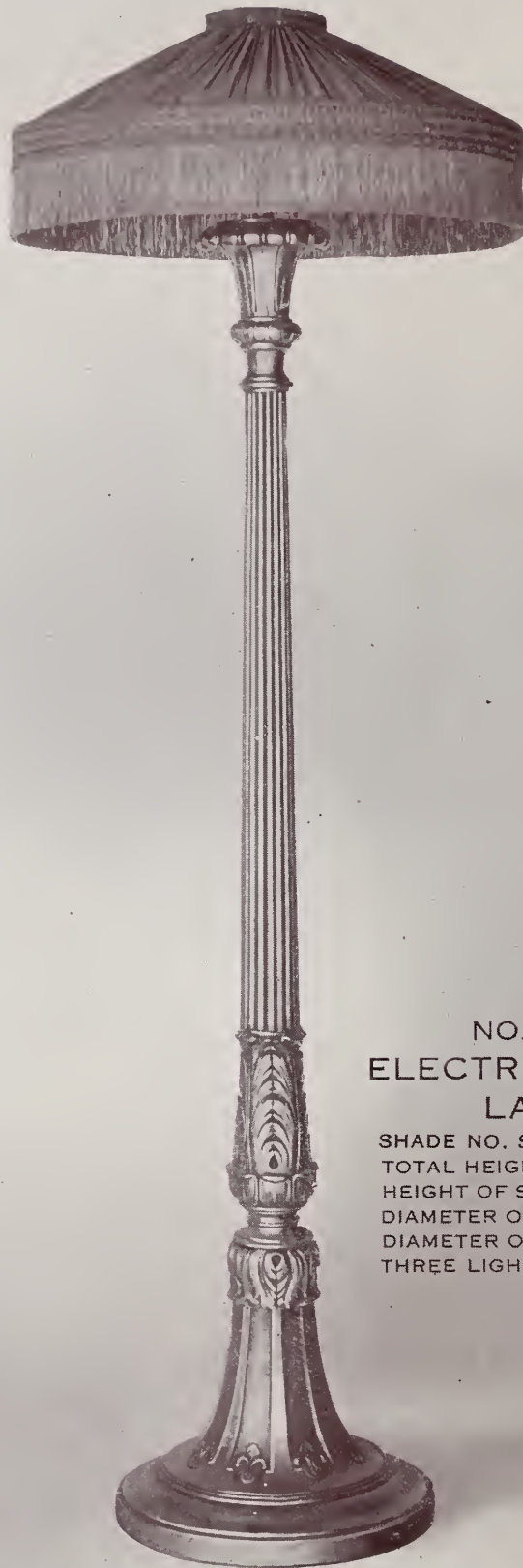
Price of
Lamp only
in Polychrome
Finish, \$70.00

THE NATIONAL METALIZING COMPANY

ARMOR



BRONZE



Price with
Shade \$76.00

Price without
Shade \$52.00

Price of
Lamp only
in Polychrome
Finish, \$64.00

NO. 737
ELECTRIC FLOOR
LAMP

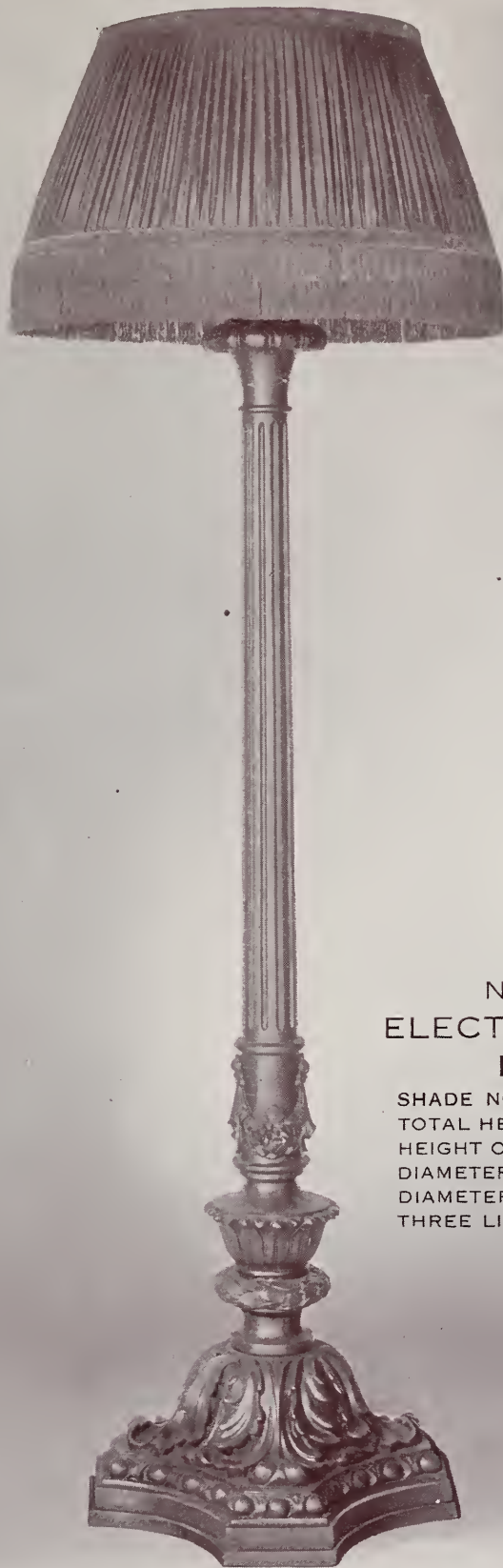
SHADE NO. SS/28
TOTAL HEIGHT 72"
HEIGHT OF STANDARD 60"
DIAMETER OF SHADE 24"
DIAMETER OF BASE 15"
THREE LIGHTS

THE NATIONAL METALIZING COMPANY

ARMOR



BRONZE



NO. 738
ELECTRIC FLOOR
LAMP

SHADE NO. SS/26
TOTAL HEIGHT 75"
HEIGHT OF STANDARD 60"
DIAMETER OF SHADE 24"
DIAMETER OF BASE 18"
THREE LIGHTS

Price with
Shade \$84.00

Price without
Shade \$60.00

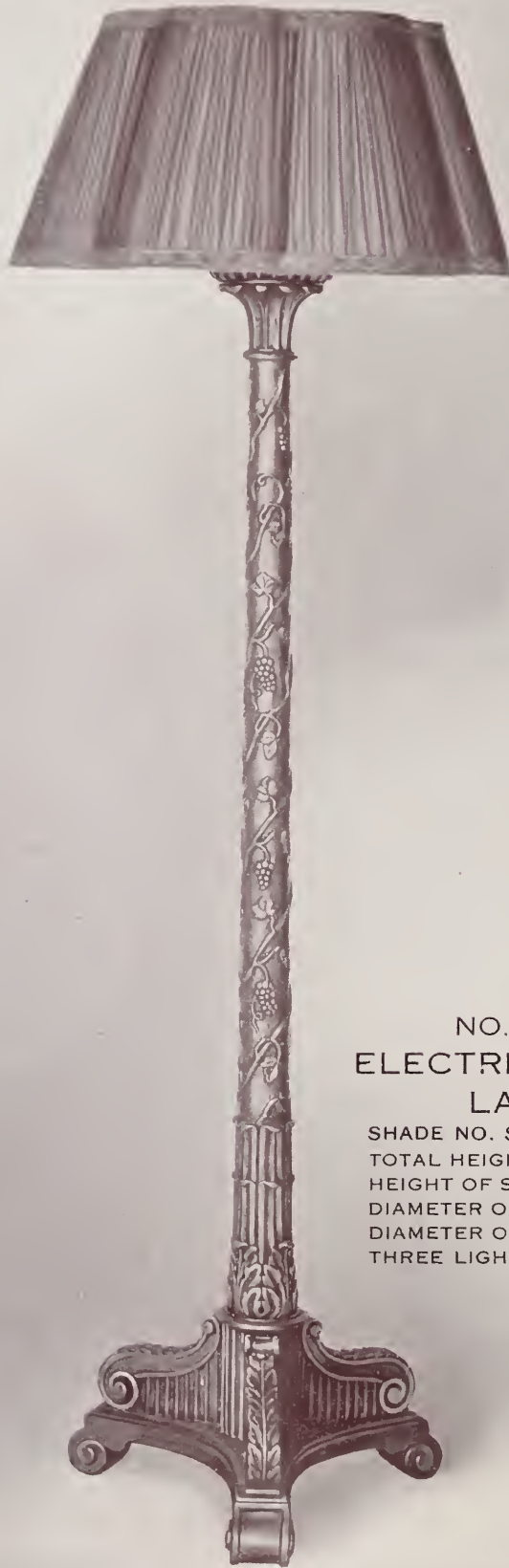
Price of
Lamp only
in Polychrome
Finish, \$75.00

THE NATIONAL METALIZING COMPANY

ARMOR



BRONZE



Price with
Shade \$76.00

Price without
Shade \$60.00

Price of
Lamp only
in Polychrome
Finish, \$75.00

NO. 724
ELECTRIC FLOOR
LAMP

SHADE NO. SS/37
TOTAL HEIGHT 72"
HEIGHT OF STANDARD 60"
DIAMETER OF SHADE 24"
DIAMETER OF BASE 16"
THREE LIGHTS

THE NATIONAL METALIZING COMPANY

ARMOR



BRONZE



NO. 723
ELECTRIC FLOOR
LAMP

SHADE NO. SS/27
TOTAL HEIGHT 72"
HEIGHT OF STANDARD 60"
DIAMETER OF SHADE 24"
DIAMETER OF BASE 19"
THREE LIGHTS

Price with
Shade \$84.00

Price without
Shade \$60.00

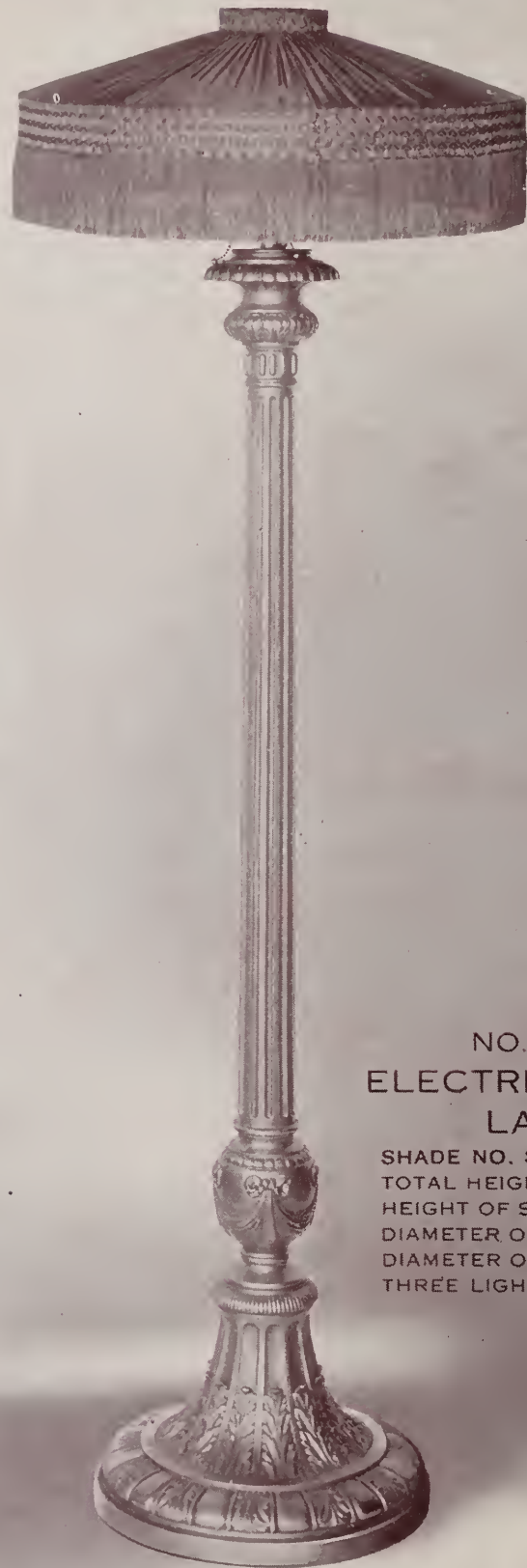
Price of
Lamp only
in Polychrome
Finish, \$75.00

THE NATIONAL METALIZING COMPANY

ARMOR



BRONZE



Price with
Shade \$84.00

Price without
Shade \$60.00

Price of
Lamp only
in Polychrome
Finish, \$75.00

NO. 744
ELECTRIC FLOOR
LAMP

SHADE NO. SS/28
TOTAL HEIGHT 72"
HEIGHT OF STANDARD 60"
DIAMETER OF SHADE 24"
DIAMETER OF BASE 16½"
THREE LIGHTS

THE NATIONAL METALIZING COMPANY

EXAMPLES OF ARMOR BRONZE POLYCHROME AND SGRAFFITO FINISHES



No. 779.—This Electric Lamp comes with 18-inch silk shade, the price is \$29.00; without shade, \$18.00.

No. 351.—This symbolic figure of "Joan of Arc" makes a most attractive Book End. 8½ inches high; \$20.00 a pair.

No. 771.—Wrapped in its Oriental mysticism, this statue of "Buddha" makes a strikingly novel Electric Lamp. By Polychrome and Sgraffito the sheen of his silken robes is brought out in a remarkably illustrative manner. Price, for 24-inch size, with 16-inch silk shade, \$48.00; without shade, \$30.00.

No. 402.—These "Wisdom" Book Ends would be a welcome addition to any library table. 8 inches high; \$16.00 a pair.

No. 776.—This attractive Electric Lamp may be had 26 inches high, with silk shade 18 inches in diameter, the price is \$35.00; without shade, \$20.00.

No. 350.—The note of antiquity of these "Egyptian" Book Ends is emphasized by the harmonious effects of the Polychrome work. 7½ inches high; \$12.00 a pair.

Any of these designs may be had in Verde, Statuary Bronze, or Old Gold finish at lower prices. See the following pages for full details.

No. 311.—The eternal riddle of the Sphinx remains unsolved, but there is no question about these "Sphinx" Book Ends; they are decidedly artistic; 7 inches high; \$12.00 a pair.

The above colorplate illustrates only a few of the many designs which we furnish in Polychrome and Sgraffito finishes

THE NATIONAL METALIZING COMPANY

SMITHSONIAN INSTITUTION LIBRARIES



3 9088 00654 0439